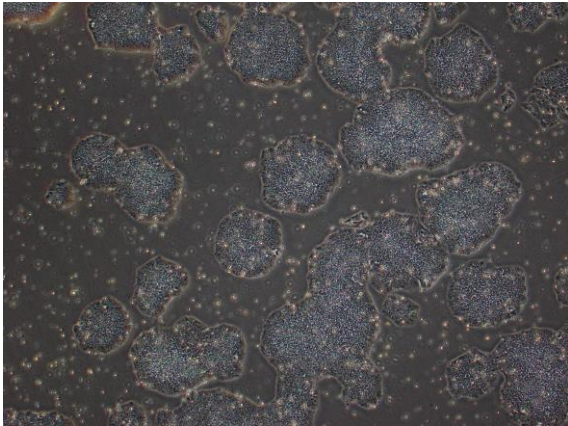
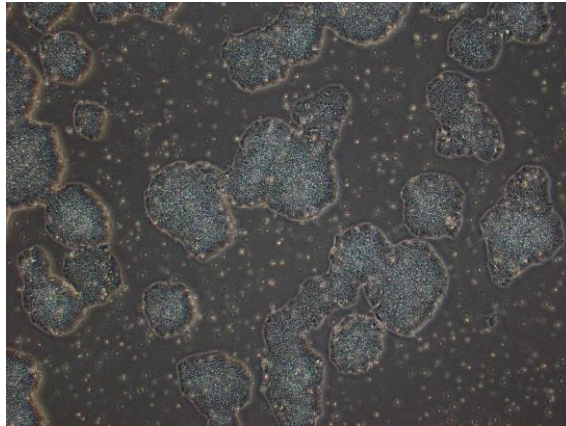


【 CiRA-j-1567 】 Morphology of iPSC colonies

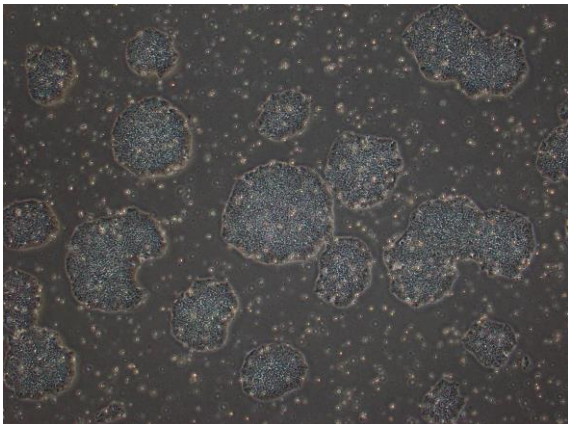
CiRA-j-1567-A: passage-3



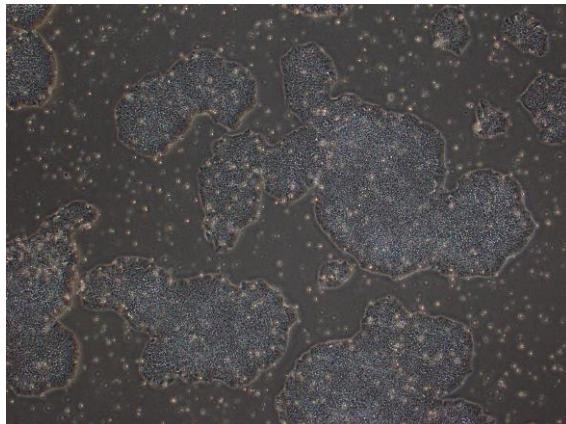
CiRA-j-1567-B: passage-3



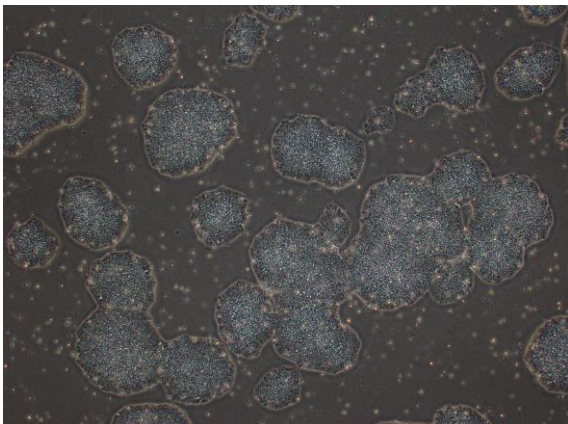
CiRA-j-1567-C: passage-3



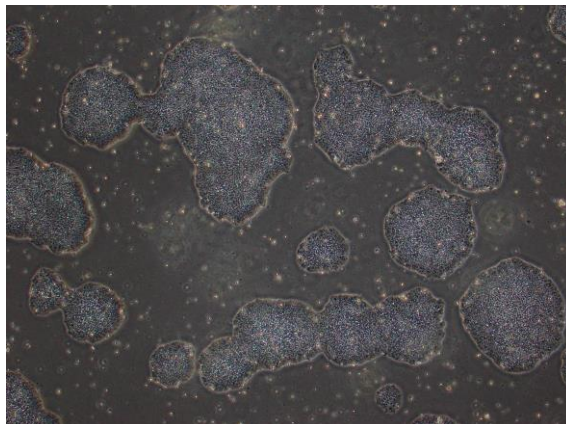
CiRA-j-1567-D: passage-3



CiRA-j-1567-E: passage-3



CiRA-j-1567-F: passage-4



(All images were captured at 4x magnification)